

# PLANTATION

A Hinkley classic, the ornate Plantation collection features exceptional pineapple-shaped, clear optic glass that makes a noble statement. The elaborate, decorative cast detailing is accentuated by its lush finish.

**FINISH:** Burnished Brass

**GLASS:** Clear Optic

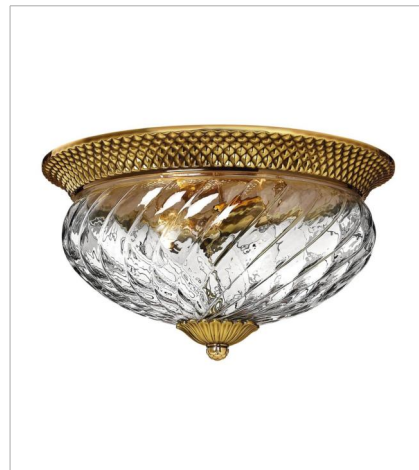
**SHADE:** Ivory Silk



**4140BB**  
SINGLE LIGHT SCONCE  
6" W, 14.5" H  
Socketed  
1-5w Cand. LED, 60w Equiv.



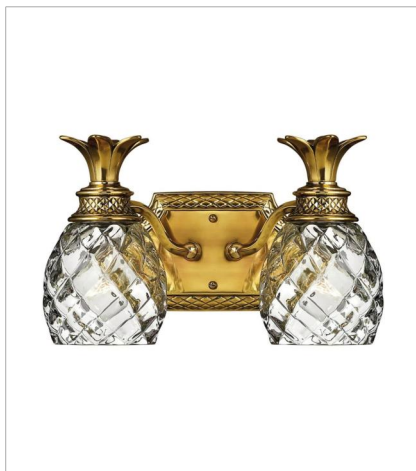
**4102BB**  
SMALL FLUSH MOUNT  
12" W, 8" H  
Socketed  
2-7w Med. LED, 60w Equiv.



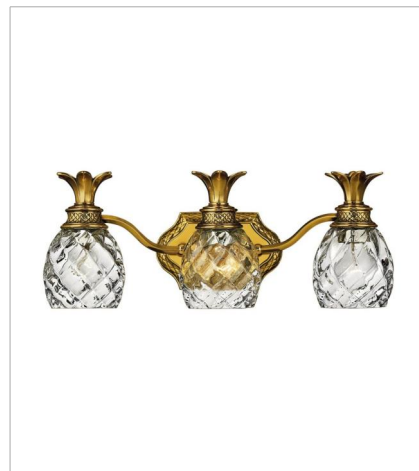
**4881BB**  
MEDIUM FLUSH MOUNT  
16" W, 8.8" H  
Socketed  
3-10w Med. LED, 60w Equiv.



**5310BB**  
SINGLE LIGHT VANITY  
5" W, 8.8" H  
Socketed  
1-10w Med. LED, 100w Equiv.



**5312BB**  
TWO LIGHT VANITY  
13" W, 8.3" H  
Socketed  
2-10w Med. LED, 100w Equiv.



**5313BB**  
THREE LIGHT VANITY  
21" W, 8.3" H  
Socketed  
3-10w Med. LED, 100w Equiv.

# HINKLEY

HINKLEY  
33000 Pin Oak Parkway  
Avon Lake, OH 44012

PHONE: (440) 653-5500  
Toll Free: 1 (800) 446-5539

[hinkley.com](http://hinkley.com)

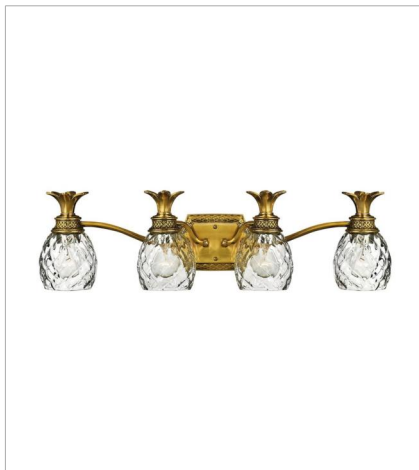
# PLANTATION

A Hinkley classic, the ornate Plantation collection features exceptional pineapple-shaped, clear optic glass that makes a noble statement. The elaborate, decorative cast detailing is accentuated by its lush finish.

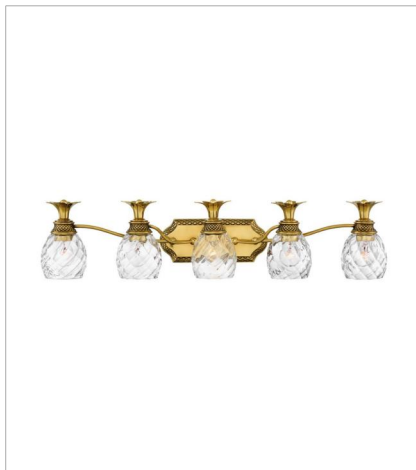
**FINISH:** Burnished Brass

**GLASS:** Clear Optic

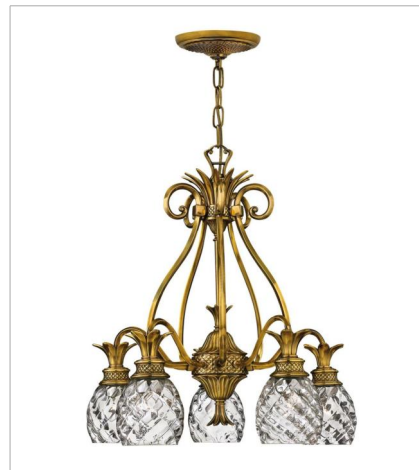
**SHADE:** Ivory Silk



**5314BB**  
FOUR LIGHT VANITY  
29" W, 8.3" H  
Socketed  
4-10w Med. LED, 100w Equiv.



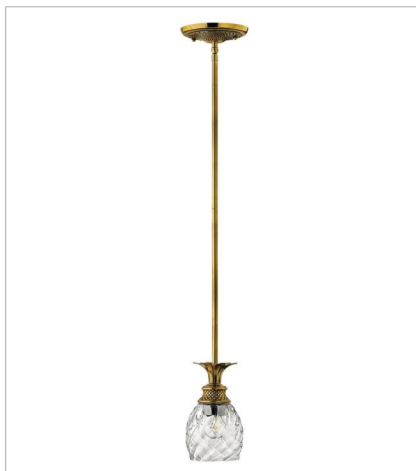
**5315BB**  
FIVE LIGHT VANITY  
37" W, 8.3" H  
Socketed  
5-10w Med. LED, 100w Equiv.



**4885BB**  
MEDIUM SINGLE TIER  
22.3" W, 24.5" H  
Socketed  
5-10w Med. LED, 75w Equiv.



**4886BB**  
LARGE SINGLE TIER  
28" W, 33" H  
Socketed  
7-5w Cand. LED, 60w Equiv.



**5317BB**  
SMALL PENDANT  
5" W, 8.3" H  
Socketed  
7-10w Med. LED, 100w Equiv.

# HINKLEY

HINKLEY  
33000 Pin Oak Parkway  
Avon Lake, OH 44012

PHONE: (440) 653-5500  
Toll Free: 1 (800) 446-5539

[hinkley.com](http://hinkley.com)